

User Instructions

MSA Web Loop Adapter

Fall Protection



Order No.: 10236224/00

Print Spec: 10000005389 (EO)

CR: 800000059887

⚠ WARNING!

These instructions must be provided to users before use of the product and retained for ready reference by the user. Read this manual carefully before using or maintaining the device. The device will perform as designed only if it is used and maintained in accordance with the manufacturer's instructions. Otherwise, it could fail to perform as designed, and persons who rely on this device could sustain serious injury or death.

The warranties made by MSA with respect to the product are voided if the product is not installed and used in accordance with the instructions in this manual. Please protect yourself and your employees by following the instructions.

Please read and observe the WARNINGS and CAUTIONS inside. For additional information relative to use or repair, call 1-800-MSA-2222 during regular working hours.

The Declaration of Conformity can be found under the following link: <https://MSAsafety.com/DoC>.

MSA is a registered trademark of MSA Technology, LLC in the US, Europe and other Countries. For all other trademarks visit <https://us.msasafety.com/Trademarks>.



The Safety Company

MSA Europe GmbH
Schlüsselstrasse 12
8645 Rapperswil-Jona
Switzerland
+44 (0) 800 066 2222
Fax 1-800-967-0398

MSA - The Safety Company
1000 Cranberry Woods Drive
Cranberry Township, PA 16066
USA
Phone: 1-800-MSA-2222

MSA Britain Ltd.,
Unit 2, Waller Road,
Hopton Park,
Devizes Wiltshire,
SN10 2JP, United Kingdom

For your local MSA contacts, please go to our website www.MSAsafety.com

Contents

1 Labels and Icons 4

2 Safety Regulations 5

3 Harness Attachment 6

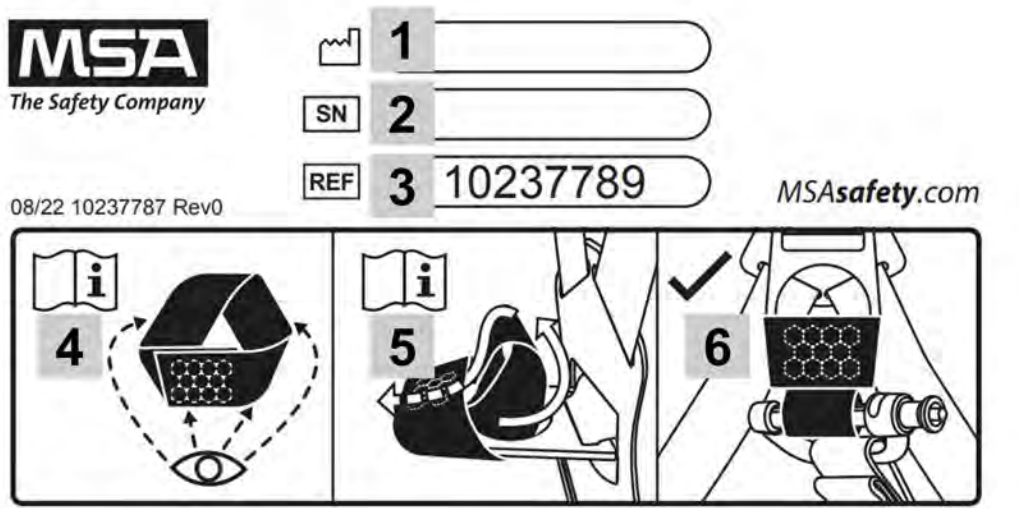
4 Installation and Use 7




5 Pre-Use Checks and Periodic Examination 8

6 Cleaning and Storage 9

7 Warranty 9

1 Labels and Icons



1		Date of manufacture	4	Refer to instruction manual for Pre-Use and Periodic Examinations.
2		Serial number	5	Refer to instruction manual for Harness Attachment.
3		Part number	6	Proper attachment.

2 Safety Regulations

WARNING!

User Requirements

- Users of the MSA Web Loop Adapter shall be medically fit and suitably trained.
- The MSA Web Loop Adapter shall not be used by pregnant people, minors or those under the influence of alcohol or drugs.
- For single user only, within the weight range 130–310 lbs (60–140 kg) for EN including user, clothing, and tools

Product Use

- The MSA Web Loop Adapter is only to be used for its intended purpose and within its limitations. DO NOT intentionally misuse this product. DO NOT use fall protection equipment for purposes other than those for which it was designed. DO NOT use fall protection equipment for towing, hoisting, or material handling.
- The Web Loop Adapter shall not be altered or added to. No unauthorized repairs, modifications, alterations and/or additions are permitted.
- RESCUE AND EVACUATION: the user must have a rescue plan and the means at hand to implement it. The plan must take into account the equipment and specific training necessary to affect prompt rescue under all foreseeable conditions. If the rescue must be performed in a confined space, it is recommended to provide means for user evacuation without assistance of others. This will usually reduce the time to get to a safe place and reduce or prevent the risk to rescuers.
- Additional lanyard connectors shall not be added, as this would serve to lengthen the lifeline and increase free fall.
- Do not use where webbing may be exposed to abrasive edges or hot surfaces (such as hot pipes), become entangled with moving machinery, or come into contact with electrical hazards (such as high voltage power lines).
- DO NOT leave the Web Loop Adapter installed in environments which could cause damage or deterioration to the product. Refer to the care details in [Section 6 Cleaning and Storage](#) and inspection details in [Section 5 Pre-Use Checks and Periodic Examination](#).
- The Web Loop Adapter shall be protected from fire, acids, caustic solutions, or temperatures outside the range -40°F to 130°F (-40°C to 54°C).
- Instructions shall be retained and provided to all users of the MSA Web Loop Adapter in the language of the destination country, even when resold.
- DO NOT exceed the maximum fall arrest forces as specified by governing standards or subsystem components.

Leading Edge-Specific Product Use

- Use in edge situations should only be as a last resort. Leading edge configurations shall only be used after all other hierarchy of controls, including restraint systems and overhead anchorages, have been exhausted.
- Avoid working where the Web Loop Adapter will continuously or repeatedly abrade against sharp, jagged, or abrasive edges.

Inspection/Removing Product From Service

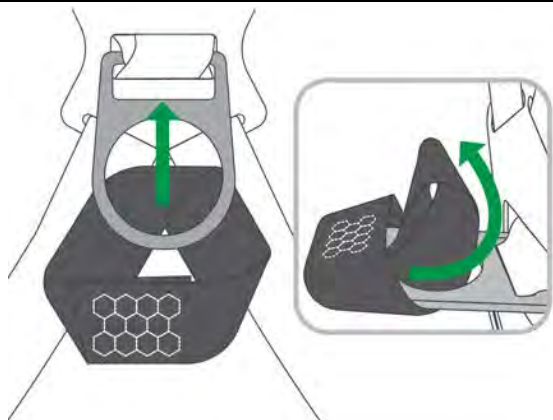
- A MSA Web Loop Adapter that has been part of a system that has arrested a fall or are unable to pass an inspection shall be tagged “UNUSABLE” until it has been destroyed and disposed of in accordance with local regulations.
- If the stitching is torn due to an arrested fall or other damage, immediately remove the Adapter from service and mark it as “UNUSABLE” until it has been destroyed and disposed of in accordance with local regulations.
- Due to the nature of some fall arrest events, it is possible for the stitching to remain intact. In the event that the Adapter is subjected to fall arrest forces and the stitching does not tear, the Adapter still must be removed from service and marked as “UNUSABLE” until it has been destroyed and disposed of in accordance with local regulations.

Failure to follow these warnings can result in serious personal injury or death.

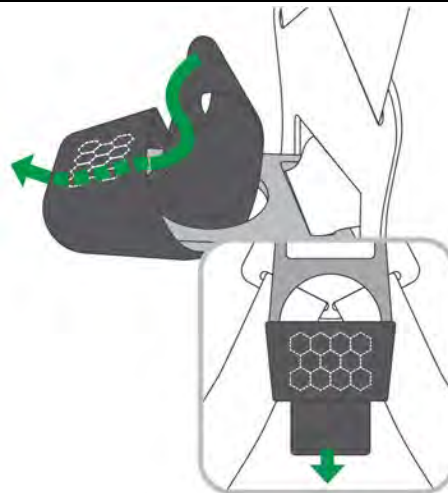
3 Harness Attachment

To attach an MSA PFL with a locking pin connector to a harness using the MSA Web Loop Adapter, complete the following steps:

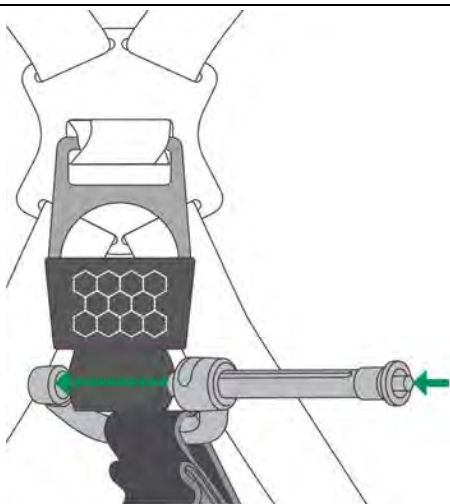
1



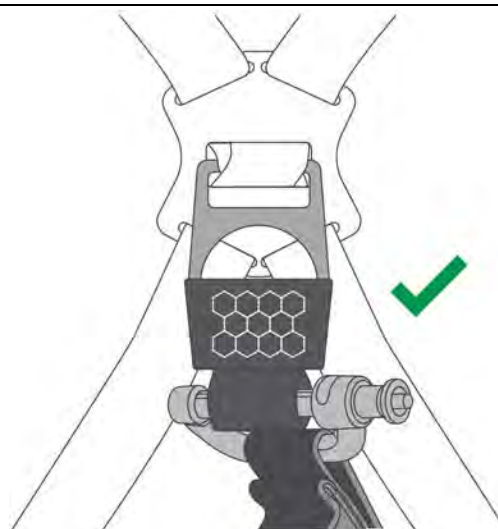
2



3



4



4 Installation and Use

The MSA Web Loop Adapter is intended to be used as a connecting element between a compatible harness D-ring and MSA PFLs with a locking pin connector. Use only with MSA PFLs with a locking pin connector.

WARNING!

- The MSA Web Loop Adapter is only to be used for its intended purpose and within its limitations. DO NOT intentionally misuse this product. DO NOT use fall protection equipment for purposes other than those for which it was designed. DO NOT use fall protection equipment for towing, hoisting, or material handling.
- The Web Loop Adapter shall not be altered or added to. No unauthorized repairs, modifications, alterations and/or additions are permitted.
- RESCUE AND EVACUATION: the user must have a rescue plan and the means at hand to implement it. The plan must take into account the equipment and specific training necessary to affect prompt rescue under all foreseeable conditions. If the rescue must be performed in a confined space, it is recommended to provide means for user evacuation without assistance of others. This will usually reduce the time to get to a safe place and reduce or prevent the risk to rescuers.
- Additional lanyard connectors shall not be added, as this would serve to lengthen the lifeline and increase free fall.
- Do not use where webbing may be exposed to abrasive edges or hot surfaces (such as hot pipes), become entangled with moving machinery, or come into contact with electrical hazards (such as high voltage power lines).
- The Web Loop Adapter shall be protected from fire, acids, caustic solutions, or temperatures outside the range -40°F to 130°F (-40°C to 54°C).

Failure to follow these warnings can result in serious personal injury or death.

Connectors: Ensure the Web Loop Adapter is compatible with the attachments to which it is connected (to prevent rollout), and ensure that the MSA PFL locking pin connector is fully closed and locked before use. Users must only use one web loop adapter and one pin connector.

Leading Edge Considerations: If a fall over an edge is possible, special rescue measures shall be defined and trained for. Consideration shall be given to accessing a suspended user without further loading or moving the lifeline over an edge. Horizontal (leading edge) use or anchoring at the feet of the user should be limited wherever possible to avoid the potential for swing fall and the possibility of the user striking a structure, potentially causing serious injury. To reduce the risk of a swing fall, anchor directly above the user.

5 Pre-Use Checks and Periodic Examination

The safety of the user relies upon the continued efficiency and durability of the equipment, therefore pre-use checks shall be completed before each use. See [Table 1 Pre-Use Checks](#) for pre-use check information. Periodic examinations shall be completed by a person, other than the user, competent in the examination of fall protection PPE, in accordance with the manufacturer's instructions. The interval will be dictated by the usage, local regulations, and environmental conditions, and will be at least annually. See [Table 2 Periodic Examination Interval](#) for more information. A record shall be kept of the results of the examination.

Table 1 Pre-Use Checks

Pre-Use Checks	Method
Stitching (Load Indicator)	Ensure that the stitching is not torn, frayed, or damaged, indicating an arrested fall. Ensure there is no fraying, stiffness, melting, chemical attack or excessive soiling.
Webbing	Examine for signs of excessive damage, wear, corrosion or contamination. Check for signs of cuts, abrasion, fraying/broken strands, tears, burns, mold, discoloration or chemical damage. Inspect the full length of the loop and verify that it has no broken, frayed, cut, abraded, or missing threads. Verify there are no reductions in width or thickness of the lifeline. Verify there are no smooth, discolored, shiny, hardened, or glazed areas that indicate exposure to heat or chemicals.
Examination Date	Ensure date of next examination has not elapsed. Ensure a periodic examination is not due as determined by a competent person. See Table 2 Periodic Examination Interval
Labels	Ensure labels are present and legible.

Table 2 Periodic Examination Interval

Usage	Interval
Infrequent to light	Annually (12 months)
Moderate to heavy	Semi-annually to annually (6-12 months)
Severe to continuous	Quarterly to semi-annually (3-6 months)

Usage shall be determined by a competent person. A competent person is defined as a person, other than the user, competent in the examination of PPE in accordance with MSA instructions.

The MSA Web Loop Adapter is not repairable. Maximum product life: Continued use is dependent upon passing pre-use checks and periodic examinations. Service life may be reduced by frequency and conditions of use or local regulations.

Inspection Checklist

Description	Good—Safe for Use	Good—Safe for Use	Good—Safe for Use	Good—Safe for Use	Damaged, Worn, Altered, Missing—Remove from Service	Comments
Stitching (Load Indicator)						
Webbing						
Labels						



6 Cleaning and Storage

If required, the MSA Web Loop Adapter webbing may be cleaned using a damp cloth and warm water (max 40°C), and allowed to dry naturally before use. Excessive build-up of dirt, paint, etc. can compromise both retraction and strength of the Web Loop Adapter.

Store or transport the Web Loop Adapter in a cool, dry, clean environment, away from heat, steam, harmful fumes, corrosive agents, rodents, dust, oil, and direct sunlight. During transportation, the device shall be protected to prevent damage or contamination. Examine the Adapter after long periods of storage prior to returning it to service.

7 Warranty

Express Warranty – MSA warrants that the product furnished is free from mechanical defects or faulty workmanship for a period of one (1) year from first use or eighteen (18) months from date of shipment, whichever occurs first, provided it is maintained and used in accordance with MSA's instructions and/or recommendations. Replacement parts and repairs are warranted for ninety (90) days from the date of repair of the product or sale of the replacement part, whichever occurs first. MSA shall be released from all obligations under this warranty in the event repairs or modifications are made by persons other than its own authorized service personnel or if the warranty claim results from misuse of the product. No agent, employee or representative of MSA may bind MSA to any affirmation, representation or modification of the warranty concerning the goods sold under this contract. MSA makes no warranty concerning components or accessories not manufactured by MSA, but will pass on to the Purchaser all warranties of manufacturers of such components. THIS WARRANTY IS IN LIEU OF ALL OTHER WARRANTIES, EXPRESS, IMPLIED OR STATUTORY, AND IS STRICTLY LIMITED TO THE TERMS HEREOF. MSA SPECIFICALLY DISCLAIMS ANY WARRANTY OF MERCHANTABILITY OR FITNESS FOR A PARTICULAR PURPOSE.

Exclusive Remedy – It is expressly agreed that the Purchaser's sole and exclusive remedy for breach of the above warranty, for any tortious conduct of MSA, or for any other cause of action, shall be the repair and/or replacement, at MSA's option, of any equipment or parts thereof, that after examination by MSA are proven to be defective. Replacement equipment and/or parts will be provided at no cost to the Purchaser, F.O.B. Purchaser's named place of destination. Failure of MSA to successfully repair any nonconforming product shall not cause the remedy established hereby to fail of its essential purpose.

Exclusion of Consequential Damages – Purchaser specifically understands and agrees that under no circumstances will MSA be liable to Purchaser for economic, special, incidental, or consequential damages or losses of any kind whatsoever, including but not limited to, loss of anticipated profits and any other loss caused by reason of the non-operation of the goods. This exclusion is applicable to claims for breach of warranty, tortious conduct or any other cause of action against MSA.

For additional information, please use your local contacts on our website www.MSAafety.com.